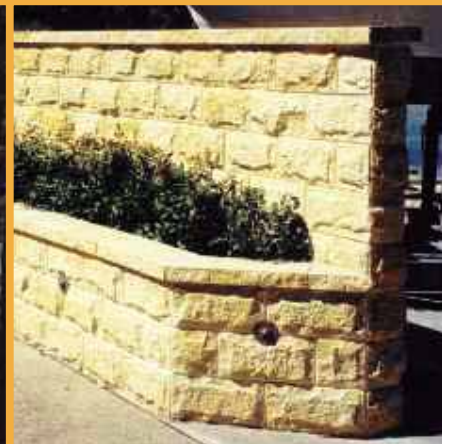
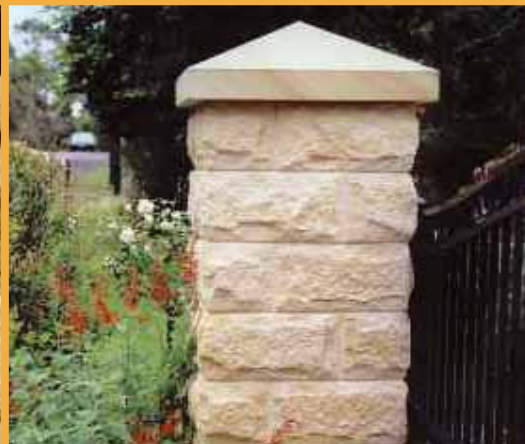


Hermitage Sandstone

House Construction, Retaining Walls, Fencing, Piers and Feature Walls



| PRODUCT | CODE | DESCRIPTION & DIMENSIONS (H x W x D) | ~ WEIGHT PER UNIT | UNITS PER PALLET | ~ UNITS PER M ² |
|---------|------|---|----------------------|---------------------|-------------------------------|
|---------|------|---|----------------------|---------------------|-------------------------------|



20121

Bolstered Standard Unit
190 x 390 x 190

18.20

90

12.5

200 Series



20133

Bolstered Split Knockout
190 x 390 x 190

18.20

90

12.5



20123

Bolstered Half Unit
190 x 190 x 190

11.20

150

-



2001

Smooth Standard Unit
190 x 390 x 190

16.70

90

12.5



2007

Smooth Half Unit
190 x 190 x 190

10.00

180

-



20139

Bolstered Corner
190 x 390 x 190

18.20

72

-



1091

Bolstered Veneer Unit
190 x 390 x 85

11.20

165

12.5

100 Series



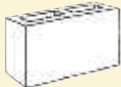
1093

Bolstered Half Veneer Unit
190 x 190 x 85

5.60

330

-



1001

Smooth Veneer Unit
190 x 390 x 90

11.20

180

12.5



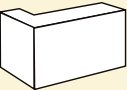
1003

Smooth Half Veneer Unit
190 x 90 x 90

5.80

360

-



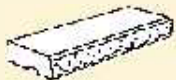
1025

Smooth Corner Return
190 x 390 x 90

16.7

120

-



5135

Capping Unit (single sided splitface)
65 x 615 x 320

22.70

60

-

Capping



5134

Capping Unit (single sided splitface)
65 x 390 x 320

15.50

90

-



5136

End Capping Unit (single sided splitface)
65 x 615 x 320

22.70

60

-



5133

End Capping Unit (single sided splitface)
65 x 390 x 320

15.50

90

-



2038

Smooth Half Height Sill
90 x 190 x 170

5.0

216

-

Sill Block

All weights and dimensions shown are approximate.

building block system

Manufacturing lead times may apply
for some products and colours

completed styles



colour range

A full range of colours are available. Please note that Desert Sand and Clinker may be manufactured if required, with a price on application.



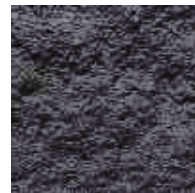
Ivory



Autumn Gold



Charlestone



*Bluestone**

*Only available on request.
Special Pricing applies.

Hermitage Sandstone

building block system

Colour Variation

Variations in colour do occur, ordering products at one time will reduce this possibility. Efflorescence (a crystalline salt deposit) is a natural occurrence in masonry products. Efflorescence does not effect the structural integrity or strength of the product. Efflorescence will usually diminish and disappear in the course of time as the product is exposed to the elements. No responsibility will be accepted for the occurrence of efflorescence.

Delivery

When placing your order please confirm delivery zone pricing and minimum free delivery quantities applicable to your area.

Permits

Any council permits relating to product delivered to site are solely the responsibility of the customer. In ordering product for delivery beyond the kerb, the customer agrees to indemnify the manufacturer, supplier, carrier and agent against any action or expense relating to damage caused or consequences arising from delivery vehicles.

Claims

Please contact the store where goods were purchased to report any concerns regarding product colour or quality. Claims must be reported within 48 hours of delivery. No claims will be accepted once product has been installed. Erosion Control does not accept return of products for any reason.

Pallets

Please phone 1800 650 195 to have your pallets picked up. A receipt will be issued when pallets are collected. Please retain this receipt, as it will be required to claim any deposits paid. Pallets always remain the property of Erosion Control.

ECS MASONRY

Erosion Control Systems Pty Ltd

www.erosioncontrol.com.au

For technical assistance please call
1 300 650 195

YOUR STOCKIST

| |
|--|
| |
|--|